

2015 IMPACT REPORT

HELPING
MEMBERS EVERY
STEP OF THE
WAY ALONG
LIFE'S JOURNEY



THE FOUNDATION



YOUR NATIONAL FOUNDATION & THE CHARITABLE ARM OF AMERICA'S CREDIT UNION MOVEMENT

The National Credit Union Foundation is the primary national philanthropic program provider, fundraiser and grant maker for America's nearly 7,000 credit unions serving over 100 million members.

MISSION

The Foundation works as "a catalyst to improve people's financial lives through credit unions."

VISION

The National Credit Union Foundation's vision is making financial freedom achievable through credit unions. At the National Credit Union Foundation, we believe that all consumers should have the education, tools and resources needed to achieve financial freedom. Through Foundation grants and programs, credit unions provide widespread financial education, create greater access to affordable financial services, and empower more consumers to save, build assets, and own homes.

We do this by:

- Building financial capability
- Making financial education meaningful & engaging
- Igniting passion & instilling knowledge about the credit union difference
- Uniting resources to help credit union people during disaster



HELPING MEMBERS EVERY STEP OF THE WAY ALONG LIFE'S JOURNEY

We are your Foundation. When you support our work by using our programs or contributing money, you're truly putting your money where your mission is. Helping members financially is at the heart of what credit unions are all about. And we – the National Credit Union Foundation – are here to help you help your members.



At the National Credit Union Foundation, we assist credit unions with programs and resources to improve people's financial lives. We help people not only every day, but every step of the way.

Whether it's a Biz Kid\$ activity for youth, a Reality Fair for a teenager, a toolkit on a trending financial capability issue such as medical debt or non-prime auto lending, a Retirement Fair for an adult, or a helping hand to recover from a disaster, we at the Foundation are proud to assist credit unions help members - of all ages – achieve financial freedom.

35 YEARS OF CHANGING PEOPLE'S LIVES

In late 2015, the Foundation celebrated its 35th anniversary as a cornerstone of the credit union movement. To see how we've made an impact since 1980, please read the highlights running along the bottom of this report.

1980

• OCTOBER, 1980

- Foundation is chartered as "CUNA Foundation." Staff includes a full-time director and one program assistant in Madison, Wis.

• 1981

- First grant: \$1,000 to New Zealand Credit Union League for custom overview analysis.

• 1982

- First Credit Union Development Education (DE) Program launches with education grant from U.S. Agency for International Development (US AID)

1990

• FEBRUARY, 1989

- First Herb Wegner Memorial Awards held in Washington, D.C. Recipients include R.C. Morgan, Cynthia Mandizha, and NCR Universal CU.

• 1991

- Board expands to include broader representation of credit unions. Foundation nears \$1 million in grants after first 11 years.

• 1992

- Patricia Brownell (Stern) hired as Executive Director. During the next nine years with Brownell leading the Foundation, more than \$7.7 million will be distributed in grants.

IMPACT BY THE NUMBERS

NON-PRIME AUTO LOANS - GIVING LOW-SCORE MEMBERS THE KEYS TO SUCCESS

\$102 million+ was lent across 10 credit unions to borrowers with an average credit score of 581 during the 18-month pilot test that concluded in 2015.

7,600+ loans were closed.

FINANCIAL COUNSELING - HELPING MORE PEOPLE PREPARE FOR THEIR FUTURE

To date, **1,655** people from **448** credit unions in 25 states have become certified financial counselors through our Enhanced FICEP Program.

In 2015, 275 new credit union staff in 9 states from **95** credit unions became certified financial counselors.

REALITY FAIRS - BUILDING YOUTH FINANCIAL CAPABILITY

26 states are currently offering Reality Fairs

67,465 estimated high school students participated in Reality Fairs in 2015



DE TRAINING - ENHANCING THE CREDIT UNION DIFFERENCE AND MOVEMENT

136 credit union professionals became Credit Union Development Educators (CUEs) in 2015



1,500+ credit union professionals from over 35 countries have become CUEs since 1982



EXPERIENTIAL LEARNING GRANTS - FUNDING THE FUTURE

\$150,600 in grants distributed to credit union organizations for member education involving Reality Fairs, Retirement Fairs and Life Simulations.



1992

OCTOBER, 1992

- "CUNA Foundation" changes name to "Credit Union Foundation" to better reflect commitment to credit unions.

1994

- Foundation receives the Distinguished Service Award from the World Council of Credit Unions for "leadership in building a meaningful vehicle to focus on development in America's inner cities, promote self-help for the country's rural poor, provide disaster relief for credit unions, and advance global self-help developmental projects."

1995

1995

- Relief efforts for Oklahoma City bombing raise \$1.4 million for Disaster Relief Fund. Every dollar is disbursed to credit union victims' families.

1995

- The Foundation is the steward of the National Credit Union Values Campaign, which brought the credit union message to the public for a few years nationally through television spots and in print. Altogether, Values Campaign public service announcements (PSAs) received more than \$26 million in estimated donated airtime and were honored with numerous awards.

1996

1996

- Foundation facilitates creation of State Credit Union Foundation Network to further credit union development at state and local levels.

FEBRUARY, 1998

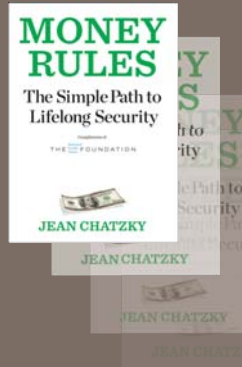
- As state credit union foundations develop, "Credit Union Foundation" changes name to "National Credit Union Foundation."

IMPACT BY THE NUMBERS

MONEY RULES BOOK

125,000+

“Money Rules” financial literacy guidebooks have been distributed in the last three years



GRANTS - PROVIDING A HELPING HAND TO CREDIT UNIONS



\$35 million+ distributed in grants over the last eleven years



Almost \$6 million in disaster relief distributed since 2004

CONVERSATION CATALYST – FACILITATING DISCUSSION ON SOCIAL MEDIA AMONG CREDIT UNIONS ON IMPORTANT & TIMELY ISSUES

4 Foundation Twitter chats held in 2015 with **60** credit unions participating with over **600** tweets and **160,000** followers/people reached



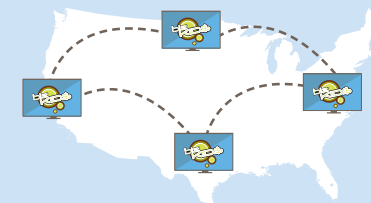
BIZ KID\$ - MAKING FINANCIAL EDUCATION ENGAGING AND MEANINGFUL



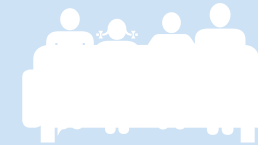
\$78,000

in Biz Kid\$ Financial Education Grants distributed to 16 credit unions organizations in 2015

Biz Kid\$ has aired on over **340** public TV stations, reaching **98%** of the country.



Since the series launched in 2008, it has reached more than **77.1 million** viewers.



In an average year, Biz Kid\$ reaches **9.6 million** viewers.

Biz Kid\$ has reached over **10.8 million** parents, educators, and students through education outreach projects.



Episodes are now airing on over **212**

commercial television stations across the country in addition to public television.



52 episodes are airing on the American Forces Network (AFN) worldwide on military bases.



1999

2001

2004

1999

- Community Investment Fund (CIF) opens to provide credit unions opportunities to donate portion of dividends to the Foundation and state credit union foundations.
- CIF attracts \$17.6 million in investments in first year.

2000

- With funding by the Ford Foundation, National CU Foundation launches two-year Building Member Wealth program, with the centerpiece being the “Plan it. Save 4 it” marketing kit piloted by 3,500 credit unions.

SEPTEMBER, 2001

- Shortly after the September 11th terrorist attacks, the Foundation establishes special fund as a means for credit unions to support victims and their families. The Foundation collected \$680,000 for The Credit Unions Rebuild America (CURA) fund, which was then distributed to the American Red Cross and United Way’s September 11 Fund.

2002

- Foundation receives \$1.4 million from the U.S. Treasury Department to establish a network of credit unions to support the Treasury Department’s First Accounts programs. Through the program, the Foundation helped 43 credit unions in 8 states move over 20,000 low-income consumers into their first savings accounts.

LATE 2004

- First America’s Credit Unions Congressional Golf Tournament held in Washington, D.C. During the next 11 years, the tournament will provide over \$920,000 in funding for Foundation programs and grants.

APRIL, 2005

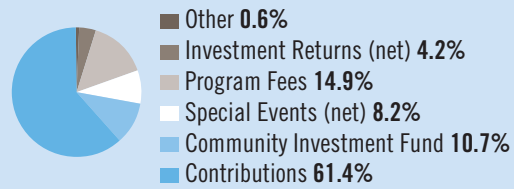
- CIF wins the Association of Fundraising Professionals (AFP) 2005 Award for Excellence in Fundraising.

FINANCIALS

2015 Revenue

Contributions	\$1,948,263	61.4%
Community Investment Fund Contributions	339,093	10.7%
Special Events (net)	259,449	8.2%
Program Fees	472,126	14.9%
Investment Returns (net)	134,569	4.2%
Other	17,559	0.6%
Totals	\$3,171,059	100.0%

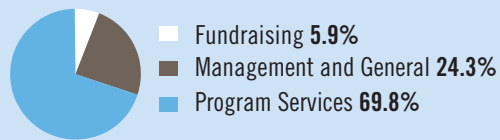
2015 Revenue



2015 Expenses

Program Services	\$2,528,745	69.8%
Management and General	879,028	24.3%
Fundraising	213,554	5.9%
Totals	\$3,621,327	100.0%

2015 Expenses



Unrealized Investment Gains	\$(156,754)
Change in Net Assets	\$(607,022)
Net Assets - Beginning of Year	\$6,162,356
Net Assets - End of Year	\$5,555,334

To read the Foundation's full 2015 financial statements, visit ncuf.coop

STAFF

Christiane Gigi Hyland, CUDE
Executive Director

Lacey Adler, CUDE
Marketing & Communications Coordinator

Kathy Heiderscheid
Finance & Administration Coordinator

Mark Lynch, CUDE
Senior Program Manager

Hannibal Brumskine
Chief Financial & Operations Officer

Danielle Brown, CUDE
Development & Donor Relations Director

Andrew Johnson, CUDE
National Program Manager

Christopher Morris, CUDE
Communications Director

Lois Kitsch, CUDE
National Program Director

Jenni Speth, CUDE
Administration & Meeting Coordinator

BOARD OF DIRECTORS

The National Credit Union Foundation is led by a great team of committed and passionate people.



Winona Nava, CUDE (Chairman)
President/CEO
Guadalupe Credit Union
Sante Fe, NM



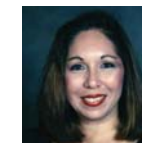
Tom Dorey
President/CEO
Suncoast Credit Union
Tampa, FL



David Mooney
President/CEO
Alliant Credit Union
Chicago, IL



Angela McCathran, CUDE (Vice Chairman)
President/CEO
People's Trust
Federal Credit Union
Houston, TX



Laida Garcia, CUDE
President/CEO
floridacentral Credit Union
Tampa, FL



Christopher Roe, CUDE
SVP, Corporate & Legislative Affairs
CUNA Mutual Group
Madison, WI



Courtney Moran, CUDE (Secretary)
Executive Director
Cornerstone Credit Union
Foundation
Farmers Branch, TX



Teresa Halleck
President/CEO
San Diego County
Credit Union
San Diego, CA



Howard Spencer
Director
Northland Area
Federal Credit Union
Oscoda, MI



Lee Butke (Treasurer)
President/CEO
Corporate One Federal
Credit Union
Columbus, OH



Stan Hollen
President/CEO
CO-OP Financial Services
Rancho Cucamonga, CA



Patricia Wesenberg, CUDE
President/CEO
Central City Credit Union
Stevens Point, WI



Jim Nussle (President)
President/CEO
Credit Union
National Association
Washington, DC



Patrick La Pine, CUDE
President/CEO
League of Southeastern
Credit Unions
Tallahassee, FL



Edwin Williams
President/CEO
Discovery Federal
Credit Union
Wyomissing, PA



Bill Cheney
President/CEO
SchoolsFirst Federal
Credit Union
Santa Ana, CA



Larry Middleman
President/CEO
CU Business Group, LLC
Portland, OR



Jeff York
President/CEO
CoastHills Credit Union
Lompoc, CA

2006

AUGUST, 2005

- Disaster Relief Fund reactivated for Hurricane Katrina. Campaign raises largest amount ever for credit union disaster relief: \$3.3 million. Over \$3.5 million is ultimately disbursed to assist survivors of Hurricanes Katrina and Rita.

MAY, 2006

- Better Business Bureau's Wise Giving Alliance bestows "seal of approval" on the Foundation for meeting National Standards of Charity Accountability.

JUNE, 2006

- The Foundation makes largest non-disaster grant commitment ever: nearly \$2 million over three years to sponsor the Biz Kid\$ TV series, which began airing on PBS in 2007.

2007

OCTOBER, 2006

- To raise funds for major disasters affecting credit unions and their people, the Foundation launched CU Aid (www.cuaid.coop), the first online disaster relief fundraising system for credit unions.

2007

- To further credit unions' efforts to serve low-wealth and modest means households, the Foundation begins the national expansion of REAL Solutions® as its signature program.

2009

- The Foundation funds the initial CU4Reality Reality Fair program from America's Credit Union Museum, a hands-on financial education experience for teenagers. The Foundation has continually encouraged and funded Reality Fair programs across the country.

2015 FOUNDATION DONORS

All of us at the Foundation are profoundly grateful for the financial support provided by our supporters and donors, from CIF investors to credit union organizations to individuals. We appreciate and salute their belief in our mission to improve people's financial lives through credit unions.

Sustaining Circle (\$125,000+)



Leadership Circle (\$75,000 - \$124,999)



Platinum Supporter (\$50,000 - \$74,999)



Gold Supporter (\$25,000 - \$49,999)

American Association of CU Leagues
California/Nevada Credit Union Leagues
Coastal FCU
CSCU
CU Direct
Fiserv
Mountain America CU
National Cooperative Bank
Randolph-Brooks FCU
Redwood CU
Royal Credit Union Foundation

Silver Supporter (\$10,000 - \$24,999)

Alaska USA FCU
Carolinas Credit Union League
Cornerstone Credit Union Foundation
Corporate One FCU
CU Solutions Group
CUNA Strategic Services Elevations CU

First Data
First Tech FCU
GECU
Georgia Credit Union Affiliates
Illinois Credit Union System
Indiana Credit Union Foundation
Iowa Credit Union League
League of Southeastern Credit Unions
MasterCard
Michigan Credit Union League
Mississippi Credit Union Association
Montana Credit Union Network
Mountain West Credit Union Association
New Jersey Credit Union League
Northwest Credit Union Association
Nusenda CU
Patelco CU
Pennsylvania Credit Union Foundation
People's Trust FCU
PSCU
Sharonview FCU

Bronze Supporter (\$5,000 - \$9,999)

Alliant CU
Allied Solutions
Alloya Corporate FCU
American Share Insurance/Excess Share Insurance
Associated CU
Canton School Employees FCU
Catalyst Corporate FCU
Charlotte Metro FCU
Cornerstone Credit Union League
Credit Union Association of New Mexico
CU Business Group CU24
CUNA Councils
Defense Credit Union Council
Ent FCU
Georgia United CU
GESA CU
GTE Financial
Level 5
Maine Credit Union League

MEMBERS Trust Company
New York Credit Union Association
Ohio Credit Union League
Orange County's CU
Pennsylvania Credit Union Association
San Mateo CU
Schools Financial CU
Sidney FCU
Southeastern Credit Union Foundation
State Employees' CU
Summit CU
Superior CU
SWBC
Tampa Chapter of CUs
The ProCon Group
TransUnion
VISA
Volunteer Corporate CU
Wisconsin Credit Union League

\$2,500 - \$4,999

African American CU Coalition
Anheuser-Busch Employees CU
Community Credit Union of Florida

2011

JANUARY, 2010

- Foundation activates CUAid in conjunction with World Council of Credit Unions for the credit union employees and members who suffered catastrophic loss due to the earthquake in Haiti. US credit unions and their members raised \$453,390 for this disaster alone.

MARCH, 2011

- The Foundation launches enhanced FiCEP program working with three partners (CUNA CPD, state leagues and credit unions). The program trains credit union employees to learn how to counsel members to better prepare for their future and assist with financial difficulties.

JUNE, 2011

- Fundraising and outreach for Biz Kid\$ transitions from the Washington Credit Union Foundation to the National Credit Union Foundation.

2012

JANUARY, 2012

- "Credit Unions Focused on Financial Capability Across the Nation" report released. The landmark free report is the result of comprehensive data collection by the Foundation to show impact of credit union's financial education efforts.

APRIL, 2012

- The Foundation (with assistance from the Cornerstone Credit Union Foundation) pilots the first "Financial Fitness Day" on the first Wednesday in April. Financial Fitness Day continues as a way to raise funds for the National Credit Union Foundation and state credit union foundations in support of their critical financial education initiatives.

AUGUST, 2012

- The National Credit Union Foundation's REAL Solutions Program in cooperation with CUNA Mutual Group develops a new Retirement Fair. The fair is similar to the Reality Fair model but is designed to assist credit unions help their members and staff better prepare for retirement.

2015 FOUNDATION DONORS

Community Financial CU
Credit Unions Care
Foundation of Virginia
Fairfax County FCU
floridacentral CU
Heartland Credit Union
Association
J.P. Morgan Securities
KEMBA Financial CU
Kinecta FCU
Melrose CU
Motorola ECU
Northland Area FCU
Peach State FCU
Pentagon FCU
San Diego County CU
SECU
Shell FCU
State Farm FCU
Tennessee Credit Union
League
True North FCU
TruWest Credit Union
University FCU
UniWyo FCU
Wright Patt CU
\$1,000 - \$2,499
Affinity Plus FCU
Altana FCU
Amarillo Community FCU

American Airlines FCU
American Heritage FCU
America's First FCU
AmeriCU CU
APCO ECU
Beehive FCU
Billings FCU
Butke, Lee
C U Cooperative
Branching LLC
Central Missouri
Community CU
Cooperative Credit Union
Association
Credit Union Association
of the Dakotas
Credit Union of Southern
California
Dorety, Thomas
Econocheck Corporation
Filene Research Institute
Genisys CU
Graham, John
Guadalupe CU
Halleck, Teresa
La Capitol FCU
La Pine, Patrick
Local Government FCU
Louisiana Credit Union
League
Louisiana FCU

Maryland & DC Credit
Union Association
Mazuma CU
Metro CU
Middleman, Larry
Missoula FCU
Multi-Bank Securities Inc
Navigator CU
Newton, Susan
Oakland County CU
Ohio Credit Union
Foundation
Pawtucket CU
Potlatch No 1 FCU
Purvis, Charles
Pyramid FCU
Quorum FCU
Richard Myles Johnson
Foundation
Ser Technology
Corporation
Shreveport FCU
Smart Financial CU
Star One CU
Strategic Partners
The CU League of
Connecticut
The DMA Group
The Rochdale Group
Transamerica

Trona Valley
Community FCU
Universal 1 CU
Westerra CU
Xceed Financial CU
\$500 - \$999
A C M G FCU
Atkinson, Craig
AurGroup Financial CU
Border FCU
Brown, Danielle
Capital Communications
FCU
Clarity CU
Collins Community CU
Community Foundation of
Greater Des Moines
Connection CU
Cornerstone Community
FCU
Credit Union Foundation
of MD&DC
CUNA CFO Council
Dakota Plains FCU
Eagle Louisiana FCU
First Class American CU
Gallahger, James
Garcia, Laida
Great NorthWest FCU
HealthCare Associates CU

Heritage Family FCU
Houston Highway CU
Hyland, Gigi
Idaho Credit Union
League
Jamestown Area
Community FCU
Kansas Corporate CU
Kemba Indianapolis CU
Kentucky ECU
Kitsch, Lois
Long, Crystal
McCafferty, Austin
Members 1st CU
Michigan Credit Union
Foundation
Mid Minnesota FCU
MidAmerican CU
Midwest Community FCU
Millar, Wesley
Mission FCU
Money One FCU
Montana FCU
Nava, Winona
Nelson, Brian
Nicolas-Briggs, Teresa
Novation CU
NuMark CU
Numerica CU
Park Side Financial CU

Progressions CU
Providence FCU
Regional FCU
Reliant FCU
Richfield-Bloomington CU
Roe, Christopher
Russell Country FCU
San Francisco FCU
Security Service FCU
Southwest Montana FCU
Sowick, Patricia
Tarrant County's CU
The Peoples CU
Town and Country CU
United Nations FCU
Water and Power
Community CU
Westconsin CU
\$250 - \$499
1st Liberty FCU
7 Rivers Region Chapter
of Credit Unions
ABCO FCU
Arkansas Superior FCU
Barnes, Stanley
Bass, Barb
Bayreuther, Carol
Bear Paw CU
Bejarano, Karen
Candell, Thomas

Carpenter, Jeffery
Carter FCU
Cedar Falls Community
CU
Cheney FCU
Cheney, Bill
Community 1st FCU
Community Spirit CU
CUDE Class Spring 2015
Daniels-Sheridan FCU
Day, Joseph
Decker, Carla
DeWeese, Betty
Diamond Lakes FCU
Eglin FCU
Electro Savings CU
Embark CU
Epstein, Barry
Express News FCU
Family First of NY FCU
Fergus FCU
Fiore, John
First Education FCU
Fort Sill FCU
Foulke, Bruce
Freeborn, Teresa
GenFed Financial
Global CU
Goodwin, Matt
GPO FCU

Hackett-Vieira, Tessa
Hawkins, Thomas III
HealthCare Plus FCU
Hernandez, Jamie
Koester, Steve
Lafayette Schools FCU
Lincoln County CU
Lopez, Scott
Main, Barbara
McCue, Daniel
McKay, Robert
Members 1st FCU
Members 1st of NJ FCU
Mooney, David
Moran, Courtney
Morell, James
Municipal CU
Norstar FCU
North Memorial FCU
Northern Communities
CU
Nussle, Jim
NuVision FCU
Ouachita Valley FCU
Owens, Angie
Pacific Crest FCU
Parisi, Susan
Peninsula Community
FCU
Pittman, Biffle

2012

- **NOVEMBER, 2012**
- “Money Rules” book by bestselling author and finance expert Jean Chatzky becomes available from Foundation.
- Since then, over 125,000 books have been distributed by credit unions to staff, members and at community events.

- **2012**
- The Foundation starts offering Life Simulations (also known as a Poverty Simulation), which are designed to help credit union employees, volunteers and leadership begin to understand what it might be like to live in a typical low-income family trying to survive from month to month. The Foundation has held 24 simulations with over 2,060 participants.

- **AUGUST, 2013**
- Current Executive Director Gigi Hyland takes helm.

2014

- **MARCH, 2014**
- All 158 Children’s Miracle Network (CMN) Hospitals in the U.S. receive Biz Kid\$ DVD box sets thanks to the generosity of credit union organizations. This was the result of a partnership between the Foundation and Credit Unions for Kids (CU4Kids) to enhance the financial education opportunities for patients and families at CMN Hospitals.

- **MAY, 2014**
- Board expands to current form: 17 seats representing cross-sections of the credit union movement and major stakeholders.
- **2014**
- The Foundation, in partnership with the Filene Research Institute, started working with 11 credit unions in a pilot program to assist low- and moderate-income consumers with a product incubator for Non-Prime Auto Loans.

2015 FOUNDATION DONORS

Post Office ECU	Western Healthcare FCU	Carter, Rock	First Heritage FCU	Loseth, Chris	Murray, Jay	SC Telco FCU	Union Fidelity FCU
Pulido, Fernando	Westmark CU	CE FCU	Flasher Community CU	Lozano, Kristena	My Community FCU	Schenk, Michael	United Educators CU
Quam, Larry	Williams, Marcia	Chen-Del-O FCU	Frank, Susan	Lucas, Peggy	Neibaur, Brent	School Systems FCU	United Teletech Financial FCU
Ray, Michael	Williams, Murray	Chocolate Bayou Community FCU	Garner, Kathy	Luxner, Corey	Niagara's Choice FCU	Seasons FCU	Vega, Sarah
Rimrock CU	Wisconsin Valley CU Chapter	Christensen, Glenn	Gill, Buddy	Marchessault, Dean	Nohelty, Tom	Seegmiller, Roger	Voyage FCU
Rome FCU	Workman, Shannon	Community Healthcare FCU	Girsch, Susan	Martini, Cyndie	North, Robert	SEI CU	Walker, Jason
San Francisco Fire CU	WyHy FCU	Cornerstone CU	Govek, Richard	Matz, Deborah	Northern Hills FCU	Sharefax CU Inc	Warren FCU
Section 705 FCU	York, Jeffrey	Cosden FCU	Gregoire, John	McCathran, Angela	Northwestern Energy EFCU	Shea, Thomas	Westerly Community CU
Sende, Patrick	Zmolek, John	Credit Union Executives Society	Hamilton Horizons FCU	McWatters, Mark	Olszowy, Traci	Simplot ECU	Western Division FCU
Sievers, Stephanie	\$100 - \$249	Day, Lisa	Hammond, Jamie	Med5 FCU	One Source FCU	Sioux Falls FCU	White River CU
Spencer, Howard	Allmond, Bryon	Dearborn, Joe	Harper, Todd	Meharg, Ginny	Oram, Kent	Skjervem, Harley	Williams, Edwin
Spokane City CU	Antioch Community FCU	Delta Schools FCU	Hart, Karen	Meloche, Robert	Pettoruto, Robert	Smith-Egbert, Britney	Williamson, Brianne
Steffens, Dorothy	Associated Healthcare CU	Desert Valleys FCU	Hawkos, Megan	Members Advantage Community CU	Point West CU	Southwest Heritage CU	Willits, Michelle
Syracuse Cooperative FCU	Athen, Lacinda	Desjardins, David	Heritage FCU	Merrick, William	Prestil, Angela	Spiczenski, Todd	Winkers, Tonna
Tapco CU	Badlands FCU	Diekmann, Frank	High Peaks FCU	Metsger, Richard	Radway, Michael	Starr County Teachers FCU	Wood, RaAnn
TCT FCU	Bar-Cons FCU	Edge FCU	Hill, Greg	Michoud CU	Ramirez, Robert	Sunmark FCU	Woodhead, Dan
Tinker FCU	Barna, Allison	Edison CU	Homeland FCU	Mile High FCU	Ramos Ingold, Tina	Texas Workforce CU	Wright, Cheryl
Todd, Joanne	Berger, Shane	EDTECH FCU	Hurt, Judith	Miller, Lee	Rashkin, Cindy	This, James	Yoder, Cookie
Totaro, Lisa	Bjorgo, Lynne	EFCU Financial FCU	Idaho United CU	Minge, James	Rhode Island CU	Thompson, Robbie	York, Timothy
Twisdale, Mark	Bosack, Steve	Electric Cooperatives FCU	Keesee, Debra	MN Catholic CU	Rio Grande Valley CU	Tomalin, Jill	
United CU	Brauer, Megan	Elkhorn FCU	Kemba Charleston FCU	Montauk CU	River City FCU	Trick, Eric	
United Health CU	Bristol Municipal EFCU	Employees CU	Kenyon, Tracie	Morris, Christopher	River Region CU	Trico Community FCU	
Verve, a Credit Union	Bush, Bonita	Fagan, Charles	Knutson, DiAnna	Mountain Gem CU	Riverways FCU	Troost, Beth	
Watkins, Jane	Cantwell, Courtney	Fernandez, Juan	Lanphear, Sue				
Wege, Deborah	Capstone FCU	Fibre FCU	LES FCU				
West, Terry			Limestone FCU				
			Lingenfelter, Louise				

Based on contributions from 1/1/15 – 12/31/15.

In compiling this list, accuracy was a primary concern. We extend our sincere apologies to any donor, the name of which, may have been incorrectly reflected or unintentionally omitted. If you should find such a discrepancy, please call us at (800) 356-9655 ext. 4353.

2015

2014

- Due to rising demand, the Foundation holds three DE Trainings in 2014 for the first time. All 2014 Trainings reach capacity, as well as the three DE Trainings in 2015, often selling out months ahead of time.

JANUARY, 2015

- Foundation launches current logo, with the dots behind the logo symbolizing a murmuration, literally the name for a flock of starlings. This visual serves as a great metaphor for the Foundation's work since cooperative engagement with supporters is central to the Foundation's mission.

FEBRUARY, 2015

- The Foundation's Gigi Hyland was invited by the Financial Literacy and Education Commission (FLEC) to testify at a meeting at the U.S. Department of the Treasury in Washington, D.C. Hyland presented on a panel to talk about credit unions' efforts around youth savings, reality fairs, and in-school branches.

MARCH, 2015

- The National Credit Union Foundation Dinner Presenting the Herb Wegner Memorial Awards takes place for the first time at the new Marriott Marquis Washington, now the current location. Over the years, these awards have become the credit union movement's highest national honors, celebrating individuals and programs that put belief into action.

MAY, 2015

- Credit unions looking for information and tools to help members with medical debt now have an added aid, a Medical Debt Toolkit, released from the Foundation. A variety of other toolkits, designed to help credit unions meet members' needs, are also available at ncuf.coop.

DECEMBER, 2015

- Biz Kid\$ was the beneficiary of the 2015 San Diego County Credit Union® (SDCCU®) Poinsettia Bowl, donating \$1 of each ticket sold to teach kids in San Diego about money and business. This is the only collegiate bowl game sponsored by a credit union, and this was the first time that Biz Kid\$ has been the beneficiary.

National Credit Union Foundation

ncuf.coop

800.356.9655 x4979

5710 Mineral Point Road

Madison, WI 53705

The Foundation Meets the
Extensive Standards of
America's Most Experienced
Charity Evaluator



bbb.org/charity

